

## RULES FOR OPERATION OCHILTREE COUNTY CEMETERY

The Superintendent of Courthouse Maintenance for Ochiltree County is designated as Superintendent of the Ochiltree County Cemetery (hereinafter called "cemetery" or "the cemetery").

The Superintendent, either personally or through his assistants, is authorized to enforce all rules relative to the operation of the cemetery and to oversee and inspect all work performed within the boundaries of the cemetery.

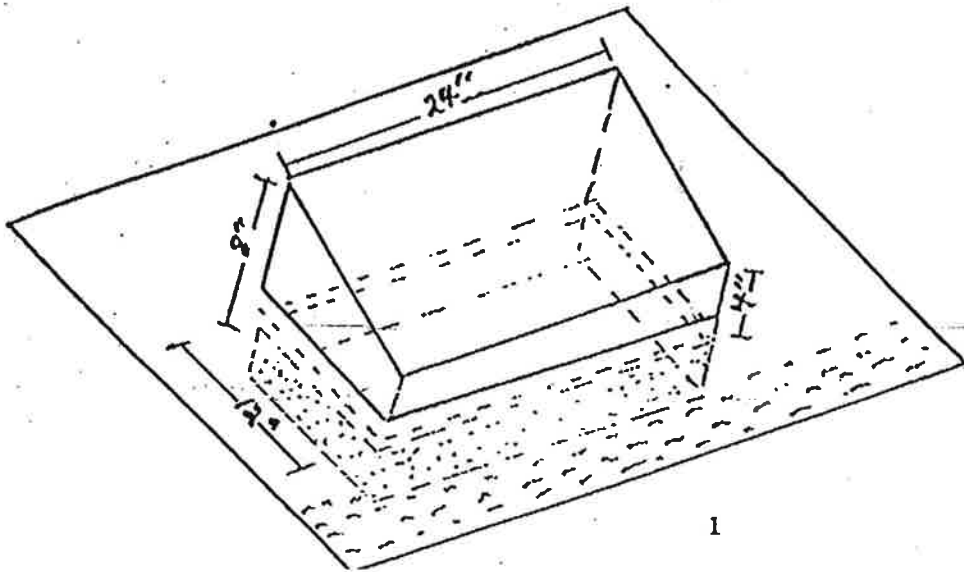
All information as to grades, boundary lines, lot dimensions, and grave locations will be available through the superintendent, and must be verified by the superintendent before beginning work, including grave openings, on any lot or gravesite.

Ochiltree County will use reasonable diligence and care in engaging competent and experienced workmen, however, in no case shall Ochiltree County, its successors or assigns, nor its servants or employees, be responsible or liable for accidents nor damage, to person or property, including, but not limited to headstones, footmarkers, curbing, vases, flowers, trees, or shrubbery, resulting from operation of the cemetery.

Ochiltree County assumes no responsibility for setting or straightening of any headstones or grave marker.

No new trees, shrubbery, growing flowers shall be planted, no loose stone or gravel material in any section will be permitted and grave markers or headstones shall be of dimension as shown below:

### HEADSTONE REQUIREMENTS



Only allowed in  
Memorial 1 & 3.  
No limit on the  
others.

Headstones set on  
concrete base 2"  
below ground.

Cornerstones need to be at ground level and no more than 6 inches in size.

No fences shall be permitted in the cemetery. No future curbing will be allowed in any part of the cemetery. No future cover for graves.

No person shall remove a monument or grave marker from the cemetery without notifying the superintendent.

Lot locations may contain a maximum of 2(two) occupants of any kind. [i.e. 1(one) casket burial and 1(one) cremains OR 2(two) cremains.]

All monuments and grave markers removed from the cemetery shall be thoroughly cleaned prior to being reset within the cemetery.

Persons engaging in erecting, removing or repairing a monument, headstone, gravemarker, vault or other structure or excavating a gravesite are prohibited from:

Continuing their labors within the immediate vicinity of a funeral service until the conclusion of the service;

Causing injury to any driveway or walkway within the cemetery;

Causing injury to any gravesite, monument, headstone, gravemarker, curbing, structure, tree, shrub, or flowering plant within the cemetery.

All surplus material, all tools and rubbish must be removed from the cemetery upon the completion of work unless prior arrangements to delay their removal have been approved by the superintendent.

In depositing, removing or moving materials from or to lots situated apart from main driveways, the intervening lots shall not be unnecessarily trespassed upon and walkways are to be unused whenever possible. To insure minimal damage, planking material shall be laid on gravesite, walk, curb or grass over which heavy materials are to be moved.

No person shall deface, harm, injure, or destroy any monument, headstone, gravemarker or structure within the cemetery.

No advertisement shall be permitted in the cemetery.

Funeral designs or floral pieces shall be removed from the cemetery when they become unsightly.

On "Decoration Day" and the day before "Decoration Day", and on "Memorial Day" and the day before "Memorial Day" no building material will be admitted to the cemetery; all unused building material, and all tools and rubbish must be removed from the cemetery; and, all gravesites, walkways, roadways, and public areas within the cemetery shall remain unobstructed.

Adopted by the Ochiltree County Commissioners' Court on September 27, 2010.

SIGNED this 11th day of Oct., 2010.

  
\_\_\_\_\_  
Earl J. McKinley  
Ochiltree County Judge

  
\_\_\_\_\_  
Jane Hammerbeck  
Ochiltree County Clerk