

RULES FOR OPERATION OCHILTREE COUNTY CEMETERY

The Superintendent of Courthouse Maintenance for Ochiltree County is designated as Superintendent of the Ochiltree County Cemetery (hereinafter called "cemetery" or "the cemetery").

The Superintendent, either personally or through his assistants, is authorized to enforce all rules relative to the operation of the cemetery and to oversee and inspect all work performed within the boundaries of the cemetery.

All information as to grades, boundary lines, lot dimensions, and grave locations will be available through the superintendent, and must be verified by the superintendent before beginning work, including grave openings, on any lot or gravesite.

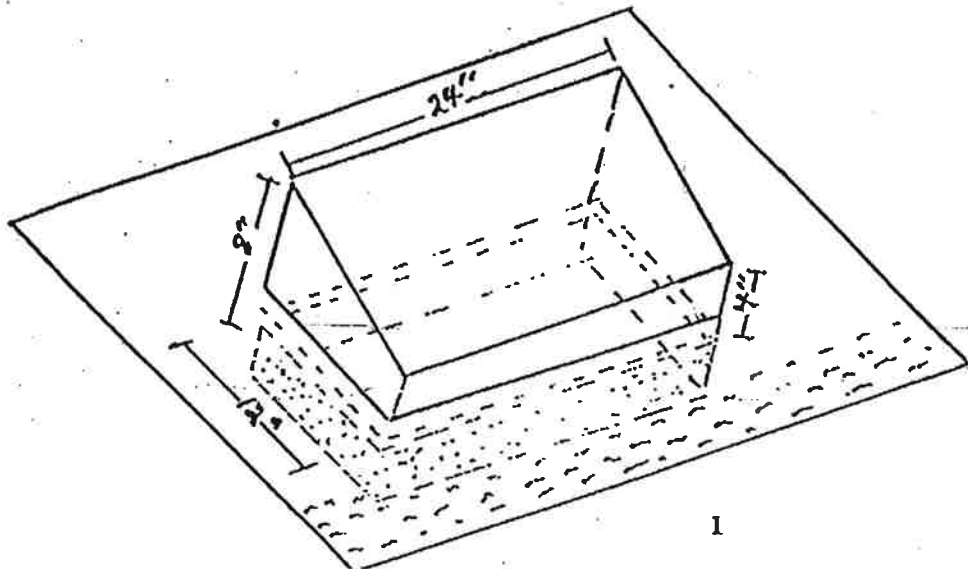
Ochiltree County will use reasonable diligence and care in engaging competent and experienced workmen, however, in no case shall Ochiltree County, its successors or assigns, nor its servants or employees, be responsible or liable for accidents nor damage, to person or property, including, but not limited to headstones, footstones, curbing, vases (glass or plastic bottles or jars), flowers, trees, shrubbery, or any other decorations resulting from operation of the cemetery.

Ochiltree County assumes no responsibility for setting or straightening of any headstones or grave marker.

No trees, shrubbery, growing flowers shall be planted; no loose stone or gravel material in any section will be permitted.

Grave markers or headstones shall be of dimension as shown below:

HEADSTONE REQUIREMENTS



Only allowed in
Memorial 1 & 3.
No limit on the
others.

Headstones set on
concrete base 2"
below ground.

Cornerstones need to be at ground level and no more than 6 inches in size.

No permanent fixtures (benches, lights, fences, stone, gravel, or bricks) shall be permitted in the cemetery. No future curbing will be allowed in any part of the cemetery. No future cover for graves.

No person shall remove or set a monument or grave marker from the cemetery without notifying the Ochiltree County Clerk's Office at (806) 435-8039 at least 48 business hours prior to the beginning of any scheduled work.

Lot locations may contain a maximum of 2 (two) occupants of any kind. [i.e. 1(one) casket burial and 1 (one) cremains OR 2 (two) cremains.]

All monuments and grave markers removed from the cemetery shall be thoroughly cleaned prior to being reset within the cemetery.

Persons engaging in erecting, removing, or repairing a monument, headstone, gravemarker, vault or other structure or excavating a gravesite are prohibited from:

- Continuing their labors within the immediate vicinity of a funeral service until the conclusion of the service;

- Causing injury to any driveway or walkway within the cemetery;

- Causing injury to any gravesite, monument, headstone, gravemarker, curbing, structure, tree, shrub, or flowering plant within the cemetery.

All surplus material, tools, and rubbish must be removed from the cemetery upon the completion of work unless prior arrangements to delay their removal have been approved by the superintendent.

In depositing, removing, or moving materials from or to lots situated apart from main driveways, the intervening lots shall not be unnecessarily trespassed upon and walkways are to be unused whenever possible. To ensure minimal damage, planking material shall be laid on gravesite, walk, curb, or grass over which heavy materials are to be moved.

No person shall deface, harm, injure, or destroy any monument, headstone, gravemarker or structure within the cemetery.

No advertisement shall be permitted in the cemetery.

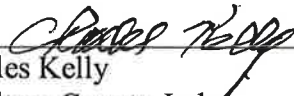
Funeral designs or floral pieces shall be removed from the cemetery when they become unsightly.

On "Decoration Day" and the day before "Decoration Day", and on "Memorial Day" and the day before "Memorial Day" no building material will be admitted to the cemetery; all unused building material, and all tools and rubbish must be removed from the cemetery; and, all gravesites, walkways, roadways, and public areas within the cemetery shall remain unobstructed.


Adopted by the Ochiltree County Commissioners' Court on 26th day of October 2020.

SIGNED this 26 day of October, 2020.





Charles Kelly
Ochiltree County Judge



Cassi Laxton

Ochiltree County Clerk

Commissioner Precinct 1 Duane Pshigoda
Commissioner Precinct 2 Joe Johnson
Commissioner Precinct 3 J.W. DeWitt
Commissioner Precinct 4 Kevin Walker
Ochiltree County Judge Charles Kelly

Acknowledgment of Rules

I have received, read, and understand the Rules for Operation – Ochiltree County Cemetery, and will do my best to observe them at all times. I shall keep these instructions for future reference. I understand that failure to observe these rules can result in removal of anything that creates a maintenance issue at Ochiltree Cemetery.

Printed Name

Purchaser's Signature

Date

Ochiltree County Representative Signature

Date

